

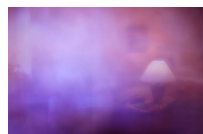


Denver + Marfa rulegallery.com  
info@rulegallery.com 303-800-6776

# Britland Tracy

## *Rupture*

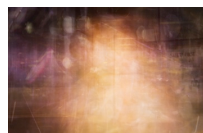
July 10 - September 20, 2020



***You're going back to Missoula, Montana***

2015, archival pigmented ink print  
26 x 38 inches / 66 x 96.5 cm (framed)  
ed. 4 of 10

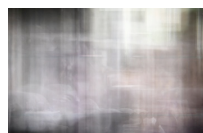
Framed \$1,500



***There's something else***

2020, archival pigmented ink print  
26 x 38 inches / 66 x 96.5 cm (framed)  
ed. 1 of 10

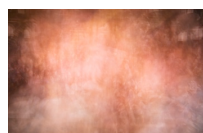
Framed \$1,500



***Only this time, you're never coming back***

2020, archival pigmented ink print  
26 x 38 inches / 66 x 96.5 cm (framed)  
ed. 1 of 10

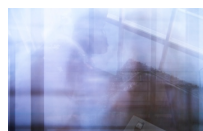
Framed \$1,500



***Give up?***

2020, archival pigmented ink print  
26 x 38 inches / 66 x 96.5 cm (framed)  
ed. 1 of 10

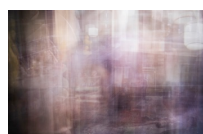
Framed \$1,500



***I'll be back***

2020, archival pigmented ink print  
26 x 38 inches / 66 x 96.5 cm (framed)  
ed. 1 of 10

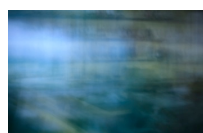
Framed \$1,500



***You'll figure it out***

2020, archival pigmented ink print  
26 x 38 inches / 66 x 96.5 cm (framed)  
ed. 1 of 10

Framed \$1,500



***No, no, no, no***

2018, archival pigmented ink print  
26 x 38 inches / 66 x 96.5 cm (framed)  
ed. 2 of 10

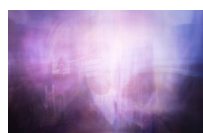
Framed \$1,500



***I didn't want it to be like this***

2020, archival pigmented ink print  
26 x 38 inches / 66 x 96.5 cm (framed)  
ed. 1 of 10

Framed \$1,500



***We'll have to silence you permanently***

2020, archival pigmented ink print  
26 x 38 inches / 66 x 96.5 cm (framed)  
ed. 1 of 10

Framed \$1,500

Unframed Prints \$1,000